

Effective from 1 October 2010

[illegible]

Introduction

New Metlink fares take effect from 1 October 2010.

The following fare products are no longer available;

- Discovery Pass
- STAR Pass
- Hutt Valley monthly pass
- Gold Pass
- Bus King
- Runciman’s monthly commuter pass
- Quarterly train ticket

How can I get timetable information?

- Call 0800 801 700. The information line operating hours are Monday to Saturday 7.00am – 9.00pm and Sunday and public holidays 8.00am – 8.00pm.
- Use Journey Planner on the Metlink website, www.metlink.org.nz
- Use txtBUS and txtTRAIN. Learn more about these services on the Metlink website.
- Pick up a paper timetable from one of our timetable outlets throughout the greater Wellington region.
- Keep up-to-date with what’s happening on the Metlink network by following ‘metlinkwgt’n’ on Twitter.

Most of the fares in this leaflet are set by Greater Wellington Regional Council, which contracts transport operators to provide most of the Metlink services. However some of the fares, in particular, special fares (pages 12–14) and the monthly (page 6) and off-peak bus fares (page 11), are set by the operator of the services. Operator fares are subject to change at operator discretion. Fares shown in this leaflet were correct at the time of printing.




Contents

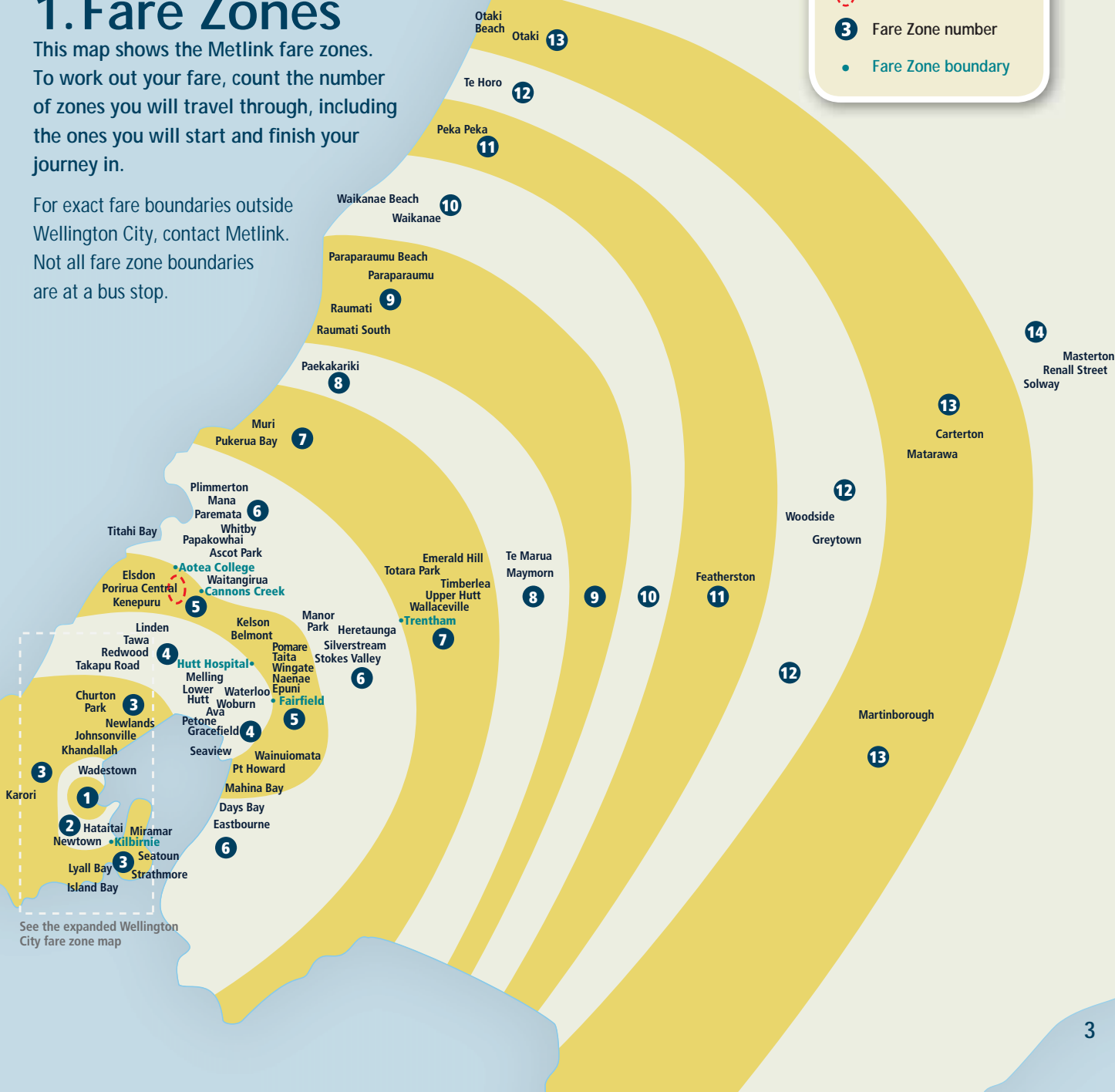
1. Fare Zones	3
2. Adults	5
3. Children / Concession	7
4. Seniors and War Veterans	9
5. Groups	9
6. Off-peak travel	10
7. Special fares	12
Which routes have special fares?	12
Stadium Connection ticket	12
After Midnight bus services	12
Route 91 Airport Flyer	13
Stadium Shuttles	13
Wellington Harbour Ferry	14
8. Transfer tickets	14
9. Stored value cards	15
10. Cycles on trains	15
11. Commercial services	15

1. Fare Zones



This map shows the Metlink fare zones. To work out your fare, count the number of zones you will travel through, including the ones you will start and finish your journey in.

For exact fare boundaries outside Wellington City, contact Metlink. Not all fare zone boundaries are at a bus stop.

-  City Section
-  Fare Zone number
-  Fare Zone boundary



Wellington City Fare Zone

-  City Section
- 3** Fare Zone number
-  Fare Zone boundary



Passengers travelling to and from the Airport, on Route 91 Airport Flyer, count the Airport stop as another zone.

2. Adults

ELIGIBILITY

Unless you are eligible for another fare you must pay an adult fare.

ZONAL FARES

	 Train & bus		 Train only*	
No. of zones	Cash	10-trip & stored value card – per trip	Off-peak cash	Monthly
City Section	\$2.00	\$1.50	–	–
1	\$2.00	\$1.60	\$2.00	\$48.00
2	\$3.50	\$2.46	\$3.00	\$73.60
3	\$4.50	\$3.28	\$3.50	\$98.20
4	\$5.00	\$3.68	\$4.00	\$110.40
5	\$6.00	\$4.50	\$4.50	\$135.00
6	\$7.50	\$5.73	\$6.00	\$171.80
7	\$8.50	\$6.55	\$6.50	\$196.30
8	\$9.50	\$7.36	\$7.50	\$220.80
9	\$10.50	\$8.18	\$8.00	\$245.40
10	\$11.50	\$9.00	–	\$269.90
11	\$13.00	\$10.40	–	\$312.00
12	\$14.00	\$11.20	–	\$336.00
13	\$16.00	\$12.20	–	\$366.00
14	\$17.00	\$13.00	–	\$390.00
Johnsonville line only – 3 zones	\$4.50	\$3.28	–	\$90.00
Johnsonville line only – 3 zones	Peace train			\$80.00

* For monthly bus products refer to bus section (page 6)

Ngauranga and Kaiwharawhara Stations are in zone one for train and zone two for bus travel.

Continued next page

Adults *Continued*

OTHER FARES



Train

10-trip ticket

10-trip tickets for Tranz Metro are available from ticket agencies, giving you at least a 20% discount off the individual cash fare.

Monthly train ticket

Available for travel every day (including weekends) between the stations specified on the ticket and offer a saving of up to 40%. Tickets are issued for a calendar month. They can be purchased on a pro-rata basis but only if bought in conjunction with a monthly ticket for the succeeding month.

Johnsonville Line Peace Train ticket

Monthly \$80.00

Designed for travel outside the busiest times, this ticket can be used on all Johnsonville trains except those that are scheduled to arrive in Wellington between 8.00am – 8.30am, Monday to Friday. Provides a discount off the current monthly ticket price.

Wairarapa trains – minimum fare

A minimum cash fare of 8 zones applies for journeys between any of Upper Hutt, Waterloo, Petone and Wellington Stations on Wairarapa trains. Passengers using a Hutt Valley 10-trip or Monthly ticket are required to pay a cash surcharge to on-board train staff.



Bus

GetAbout Pass – \$185.00

Unlimited travel for a 30 day period on any GO Wellington, Valley Flyer (including Airport Flyer) and Runciman's services. Available only on Snapper.

Platinum Pass – \$200.00

Unlimited travel for one calendar month on Valley Flyer (including Airport Flyer), Mana Coach Services (excluding Kapiti commuter bus services to/from Wellington), Newlands Coach Service and GO Wellington services.



Combined bus and train tickets

Metlink HuttPlus Monthly ticket

A Tranz Metro Monthly ticket, plus \$55.00

Unlimited bus and train travel for one calendar month on Valley Flyer routes 110 – 170 and Tranz Metro services between the following stations: Wellington and Waterloo/Melling, Wellington and Taita, Wellington and Upper Hutt. Available from Upper Hutt, Waterloo, Petone and Wellington train stations.

Metlink WairarapaPlus tickets

WairarapaPlus – Greytown (monthly) \$336.00

WairarapaPlus – Martinborough (monthly) \$366.00

The Metlink WairarapaPlus-Greytown and the Metlink WairarapaPlus-Martinborough tickets are a combined train and bus monthly ticket available for travel on Tranz Metro services and connecting bus services between Greytown and Wellington and Martinborough and Wellington for one calendar month. The Metlink WairarapaPlus tickets are not available on a pro-rata basis.

Metlink KapitiPlus

Tranz Metro Monthly ticket, Paraparaumu to Wellington \$245.40

If you hold a valid Tranz Metro adult Monthly train ticket from Paraparaumu to Wellington, you can transfer between trains and Mana buses within zone nine in Paraparaumu at no extra cost. Simply show your train ticket to the bus driver. This offer does not apply to the Capital Connection.

- Travelling as part of a group? See group tickets on page 9.
- Have a look at 'Special fares' on page 12.
- Travelling off-peak? Save money with our great off-peak deals on page 10.
- Learn about stored value cards on page 15 to save more.

3.Children / Concession

ELIGIBILITY

- Children aged 5 to 15. Children under 5 years travel free.
- Secondary school students aged 16 to 19 in school uniform or on production of a current school photo ID.

ZONAL FARES

	 Train & bus		 Train only*	
No. of zones	Cash	10-trip & stored value card – per trip	Monthly train	School term ticket
City Section	\$1.50	\$1.10	–	–
1	\$1.50	\$1.20	\$36.00	\$90.00
2	\$2.00	\$1.40	\$42.00	\$105.00
3	\$2.50	\$1.70	\$51.00	\$127.50
4	\$3.00	\$2.05	\$61.40	\$153.40
5	\$3.50	\$2.46	\$73.60	\$184.00
6	\$4.00	\$2.87	\$85.90	\$214.70
7	\$4.50	\$3.28	\$98.20	\$245.40
8	\$5.00	\$3.68	\$110.40	\$276.00
9	\$5.50	\$4.09	\$122.70	\$306.70
10	\$6.00	\$4.50	\$135.00	\$337.40
11	\$6.50	\$5.20	\$156.00	\$390.00
12	\$7.00	\$5.60	\$168.00	\$420.00
13	\$8.00	\$6.10	\$183.00	\$457.50
14	\$8.50	\$6.50	\$195.00	\$487.50
Johnsonville line only – 3 zones	\$2.50	\$1.70	\$51.00	\$110.00

* For school bus passes refer to bus section (page 8)

Ngauranga and Kaiwharawhara Stations are in zone one for train and zone two for bus travel.

Continued next page

Children / Concession *Continued*

OTHER FARES



10-trip tickets

Child 10-trip tickets for Tranz Metro are available from ticket agencies, giving you at least a 20% discount off the individual cash fare.

School term passes

This pass is available to full-time primary and secondary school students for travel between school and the station nearest their home. School students without a pass are required to pay a child fare.



10-trip tickets

Transit Coachlines have child 10-trip tickets, giving you at least a 20% discount off the individual cash fare.

School term ticket

Mana Coach Services, Newlands Coach Service, Runciman's and Transit Coachlines offer school term passes. Call Metlink for more information about these passes.

- Travelling as part of a group? See group tickets on page 9.
- Have a look at 'Special fares' on page 12.
- Travelling off-peak? Save money with our great off-peak deals on page 10.
- Learn about stored value cards on page 15 to save more.



4. Seniors and War Veterans

SuperGold card

All holders of SuperGold cards (i.e. those over 65 years of age, war veterans and Superannuation recipients) can travel free on off-peak Metlink services. For general information about SuperGold cards please call 0800 25 45 65 or visit www.supergold.govt.nz

What is off-peak travel?

- Weekday off-peak travel is between 9.00am and 3.00pm, and after 6.30pm.
- Off-peak also applies all day on weekends and public holidays.
- Train services identified as off-peak in timetables may differ from services eligible for free travel with your SuperGold card.

How do I use my SuperGold card to travel for free?

Simply present your SuperGold card to the ticket collector or bus driver.

What happens if I want to travel during peak hours?

You will need to pay the adult fare, refer to Adult fares on page 5.

- Travelling as part of a group? See group tickets below.
- Learn about stored value cards on page 15 to save more.
- Have a look at 'Special fares' on page 12.

5. Groups

Train

Group Rover ticket – \$35.00

Available for up to four people travelling together on weekdays from the commencement of off-peak services (as shown in train timetables) and all day on weekends and public holidays.

Conditions of use for Rover tickets

All Rover tickets can be used on train services between Wellington, Paraparaumu, Upper Hutt and Johnsonville. They allow transfers between lines and any number of broken journeys on the day for which they are valid.

Wairarapa Group Excursion ticket – \$50.00

A same day return ticket for up to four people for travel between Wellington and Wairarapa. Available on all services except those services scheduled to arrive in Wellington before 9am, Monday to Friday. Can be purchased on the train.

Bus

Family BusAbout – Wellington and Hutt Valley – \$20.00

Up to one adult and five children or two adults and four children. Unlimited travel for one day (after 9.00am weekdays and all day on weekends and public holidays) on GO Wellington and Valley Flyer services. Cannot be used on After Midnight services, Airport Flyer or Stadium Shuttles. Available from bus drivers.



6. Off-peak travel

There's a variety of ticket options when you choose to travel off-peak on buses and trains in the greater Wellington region.

The timing of off-peak services depends on the terms and conditions for each off-peak ticket. Daily off-peak tickets can be purchased from bus drivers. Daily off-peak train tickets are available from train staff and from Tranz Metro ticket offices.

Daily train tickets

Off-peak cash fares

Off-peak cash fares are only available on the off-peak services shown in train timetables. For convenience an off-peak 10-trip ticket is also available. These tickets are available from Tranz Metro ticket offices.

No. of zones	Adult off-peak cash
1	\$2.00
2	\$3.00
3	\$3.50
4	\$4.00
5	\$4.50
6	\$6.00
7	\$6.50
8	\$7.50
9	\$8.00
10	–
11	–
12	–
13	–
14	–

Day Rover ticket – \$13.00

Available for travel on weekdays from the commencement of off-peak services (as shown in train timetables) and all day on weekends and public holidays.

3 Day Weekend Rover ticket – \$20.00

Available for travel from 4:30am on Friday until midnight on Sunday.

Conditions of use for Rover tickets

All Rover tickets can be used on train services between Wellington, Paraparaumu, Upper Hutt and Johnsonville.

They allow transfers between lines and any number of broken journeys on the day for which they are valid.

Wairarapa Day Excursion ticket – Adult \$18.00, Child \$9.00

A same day return fare for travel between Wellington and Wairarapa. Available on all services except those services scheduled to arrive before 9am, Monday to Friday. Can be purchased on the train.

Daily bus tickets

BusAbout – Wellington and Hutt Valley – \$9.00

Unlimited travel for one day for one person (after 9.00am on weekdays and all day on weekends and public holidays) on GO Wellington and Valley Flyer services. Cannot be used on After Midnight services, Airport Flyer and Stadium Shuttles. Available from bus drivers.

Combined bus and train tickets

Metlink Explorer ticket – \$20.00

Unlimited travel for one day after 9.00am on weekdays and all day on weekends and public holidays on Valley Flyer, Mana Coach Services, Newlands Coach Service, GO Wellington, Airport Flyer, and Tranz Metro (excluding Wairarapa and Capital Connection) services. This ticket allows you to take a child for free. Available from bus drivers, train staff and from Tranz Metro ticket offices.

- Travelling as part of a group? See group tickets on page 9.
- Have a look at 'Special fares' on page 12.
- Learn about stored value cards on page 15 to save more.
- Check out our Monthly tickets on page 6.



7. Special fares

Which routes have special fares?

- After Midnight bus services (page 12)
- Capital Connection – this is not a Metlink service
- Makara Cemetery bus service
- Runcimans Commuter buses
- Stadium Shuttles (page 13)
- Stadium Connection ticket (page 12)
- Wellington Cable Car
- Wellington Harbour Ferry (page 14)
- Whenua Tapu Cemetery bus service
- Route 285 Kapiti Commuter
- Route 80 Wainuiomata Commuter
- Route 90 Stokes Valley Commuter
- Route 91 Airport Flyer (page 13)

For special fares not shown in this leaflet please refer to individual timetables or the Metlink website.



TRAIN

Stadium Connection ticket

Hutt Valley & Paraparaumu Line	Adult \$10.00	Child \$5.00
Johnsonville Line	Adult \$6.00	Child \$3.00

Provides return travel from any station on these lines for selected events only. Tranz Metro often provides additional trains to cope with the extra volume of people. These run a few minutes ahead of scheduled services. For the return journey, they run at frequent intervals. For more information call Metlink.



BUS

After Midnight

Routes N1, N2, N3, N4: \$6.00 fare

No concession fares. No discount for stored value cards. Metlink Explorer, SuperGold and Platinum Pass tickets are accepted.

Route N5: \$6.00 fare

No concession fares. No discount for stored value cards. Metlink Explorer, SuperGold and Platinum Pass tickets are accepted.

Route N6: \$12.00 fare for travel from Wellington. \$6.00 fare for travel within Tawa and Porirua (zones 4,5,6)

No concession fares. No discount for stored value cards. Metlink Explorer, SuperGold and Platinum Pass tickets are accepted.

Routes N8, N22, N66, N88: \$12.00 fare for travel from Wellington. \$6.00 fare for travel within Hutt Valley (zones 4,5,6,7)

No concession fares. No discount for stored value cards. Metlink Explorer, SuperGold and Platinum Pass tickets are accepted.

Route 91 Airport Flyer

The Airport Flyer is an express route that travels between the Hutt Valley, Wellington City and Airport.

	Adult		Child	
No. of zones	Cash	Snapper	Cash	Snapper
1	\$5.50	\$4.40	\$3.50	\$2.80
2	\$6.50	\$5.20	\$4.00	\$3.20
3	\$7.50	\$6.00	\$4.50	\$3.60
4	\$8.50	\$6.80	\$5.00	\$4.00
5	\$9.50	\$7.60	\$5.50	\$4.40
6	\$10.50	\$8.40	\$6.00	\$4.80
7	\$11.50	\$9.20	\$6.50	\$5.20
8	\$12.50	\$10.00	\$7.00	\$5.60
9	\$13.50	\$10.80	\$7.50	\$6.00
10	\$14.50	\$11.60	\$8.00	\$6.40

Passengers travelling to and from the Airport count the Airport stop as another zone. This only applies to single adult and child cash and Snapper fares.

Other fare products that can be used on this service are;

- Platinum Pass (page 6).
- GetAbout Pass (page 6).
- SuperGold card holders (page 9) – for travel on off-peak services only.

Stadium Shuttles

Adult \$5.00 one way fare Child \$3.00 one way fare

These are special GO Wellington services that run during selected events only. The shuttles run between Courtenay Place and Westpac Stadium before and after the events.

SuperGold cards and BusAbout tickets are not accepted. Snapper discount does not apply. Platinum, GetAbout and Metlink Explorer passes are accepted. For more information call Metlink.



Continued next page

Special fares



Wellington Harbour Ferry

	Adult	Child	Student	Family
Queens Wharf, Days Bay & Seatoun fares				
One way	\$10.50	\$5.50	\$8.50	–
Return	–	–	–	\$58.00
10-trip	\$82.00*	\$34.00	\$57.00#	–
Monthly pass	\$252.00	–	\$185.00	–
Matiu Somes Island fares				
Return trip	\$22.00	\$11.50	\$18.00	\$64.00
Harbour Explorer Excursion				
Return trip	\$21.00	\$11.00	\$17.00	–

* Seatoun Wharf adult 10-trip ticket is \$67.00
Seatoun Wharf Student 10-trip ticket is \$50.00

- Family

Two adults and up to four children.
- Child

Aged three to fifteen. Children under three years travel free. Secondary school students aged 16 to 19 in school uniform or on production of a current school photo ID.
- Student

Full-time tertiary institution student. ID card required.

8. Transfer tickets

Transfer tickets are available on the following services:

- ➔ Mana and Newlands Coach Services for transfers to other Mana or Newlands Coach Services.
- ➔ Valley Flyer services for transfers to other Valley Flyer services within the Hutt Valley only, except routes 80, 90 and the Airport Flyer. Transfers only available on Snapper.
- ➔ GO Wellington route 30 Breaker Bay / Scorching Bay express services to route 28 Beacon Hill Shuttle.

These tickets can only be used to travel in a continuous direction on the next available service. For example, you cannot stop over at the transfer point to shop, as that is not making a continuous journey and two separate fares must be paid.

Metlink offers several daily (page 10) and monthly (page 6) tickets.



9. Stored value cards

Stored value cards give at least a 20%* discount off the cash fare for the individual operator. But, for example, you won't receive the discount when you use your Snapper card to buy Tranz Metro tickets. Stored value cards can be purchased from selected operator's bus drivers, ticket agencies, selected bus depots or, in some instances, from their website on payment of a deposit of \$10.00, plus a minimum of \$10.00 prepaid travel.

Stored value cards are available for use on;

- GO Wellington – Snapper
- Valley Flyer – Snapper
- Airport Flyer – Snapper
- Runciman's – Snapper
- Mana Coach Services – Smartcard
- Newlands Coach Service – Smartcard
- Madge Coachlines/Uzabus – Smartcard
- Classic Coaches – Smartcard

* The stored value card discount does not apply to the After Midnight service fares.

* Special event and promotion fares may be excluded from the discount.

* The discount does not include any administration fees that may be charged by the card provider.



10. Cycles on trains

Cycles will be carried on Tranz Metro services, room permitting. There is currently a limit of two cycles per baggage compartment. The Wairarapa services have their own baggage van and can carry more cycles. When services are replaced by buses, cycles cannot be carried on the bus. Cycles also cannot be carried on special event train services. There is no charge for cycle carriage.

The policy for the carriage of cycles on trains is to be evaluated before the new Matangi trains come into service.

11. Commercially operated services

The routes below are commercially operated services. This means that timetables, routes and fares are subject to change by the operator.

- 32 Island Bay Express
- 47 Newtown to Johnsonville
- 271 Lindale Shuttle
- 285 Kapiti Commuter
- 80 Wainuiomata Commuter
- 81,83,84,85 Eastbourne
- 90 Stokes Valley Commuter
- 91 Airport Flyer
- 92,93,98,99 Runcimans Commuter buses
- 110 Upper Hutt
- 120 Stokes Valley
- Capital Connection (this is not a Metlink service)



For timetables and information
about bus and train services in the
greater Wellington region contact
Metlink

04 801 7000
0800 801 700
txt: BUS (287)
txt: TRN (876)
info@metlink.org.nz
www.metlink.org.nz



Please recycle
Produced sustainably

GW/MET-G-10/126



greater WELLINGTON
REGIONAL COUNCIL

Transport