



---

# **Puketapapa Local Board**

## **OPEN MINUTES**

---

Minutes of a meeting of the Puketapapa Local Board held in the Rakiraki Room, Wesley Community Centre, 740 Sandringham Road Extension, Mt Roskill on Thursday, 24 February 2011 at 6.00pm.

---

### **PRESENT**

**Deputy Chairperson  
Members**

Nigel Turnbull  
Julie Fairey  
Ella Kumar  
Peter Muys  
Michael Wood

### **APOLOGIES**

**Chairperson**

Richard Barter

### **ALSO PRESENT**

**Councillor  
Councillor**

Dr Cathy Casey  
Hon. Christine Fletcher, QSO *[From 6.39pm]*

---



**A minutes silence was observed in recognition of the Christchurch earthquake.**

**1 Prayer**

**2 Apologies**

Resolution number PKTPP/2011/16

MOVED by Member Turnbull, seconded Member Kumar:

That the apologies for non-attendance from Chairperson Barter be accepted

**CARRIED**

**3 Declaration of interest**

Members are reminded of the need to be vigilant to stand aside from decision making when a conflict arises between their role as an elected representative and any private or other external interest they might have.

There were no declarations of interest.

**4 Confirmation of minutes**

Resolution number PKTPP/2011/17

MOVED by Member Turnbull, seconded Member Kumar:

That the minutes of the meeting of the Puketapapa Local Board held on Tuesday, 1 February 2011, be confirmed as a true and correct record of the meeting.

**CARRIED**

**5 Leave of absence**

There were no leaves of absence.

**6 Acknowledgements**

The board acknowledged the Christchurch earthquake and sent condolences to all those involved.

**7 Petitions**

There were no petitions.

**8 Deputations**

**8.1 Helen Cheng, 2011 Auckland International Cultural Festival**

Ms Cheng was in attendance to provide a presentation to the board, and answer any questions relating to this item.

A copy of the tabled documents have been placed on the file copy of the minutes and can be viewed at the Auckland Council website.

Resolution number PKTPP/2011/18

MOVED by Member Turnbull, seconded Member Muys:

- a) That Helen Cheng, Event Organiser for the 2011 Auckland International Cultural Festival be thanked for her presentation to the Puketapapa Local Board regarding planning progress for this event.

- b) That the Puketapapa Local Board assign board members to liaise with Auckland Tourism Events and Economic Development (TEED) for any events held in the ward, and also assign board members to be included on the organising committee for the Auckland International Cultural Festival.

**CARRIED**

## **9 Public Forum**

### **9.1 Ron Sang and Kai Luey, Auckland Chinese Garden Steering Committee**

Representatives from the Auckland Chinese Garden Steering Committee were in attendance to provide a presentation to the board, and answer any questions relating to this item.

A copy of the tabled documents have been placed on the file copy of the minutes and can be viewed at the Auckland Council website.

Resolution number PKTPP/2011/19

MOVED by Member Turnbull, seconded Member Kumar:

- a) That Ron Sang and Kai Luey, representing the Auckland Chinese Garden Steering Committee be thanked for their attendance to address the Puketapapa Local Board regarding their proposal to locate the Auckland Chinese Garden within Monte Cecilia Park.

**CARRIED**

### **9.2 The Tree Council**

This item was withdrawn.

### **9.3 Brian Nicol**

Resolution number PKTPP/2011/20

MOVED by Member Turnbull, seconded Member Kumar:

That Brian Nicol be thanked for his attendance to address the Puketapapa Local Board regarding various issues.

**CARRIED**

### **9.4 Tim Hayter and Karen Ramsey, Dominion Road extension road safety concerns**

Mr Hayter and Ms Ramsey were in attendance to speak to the board regarding road safety concerns with regards to the bend at the Dominion Road extension.

Resolution number PKTPP/2011/21

MOVED by Member Turnbull, seconded Member Muys:

- a) That Mr Hayter and Ms Ramsey be thanked for their presentation to the Puketapapa Local Board regarding road safety concerns with regards to the bend at the Dominion Road extension.

- b) That Karen Marais, Auckland Transport, be thanked for her update, noting the Road Corridor and Maintenance team are undertaking investigations on this area, and will report back to the June meeting of the Puketapapa Local Board.

**CARRIED**

item 18 was taken at this point.

## 10 Extraordinary business

### 10.1 Governing Body report – Christchurch Earthquake Assistance

Resolution number PKTPP/2011/22

MOVED by Member Turnbull, seconded Member Muys:

- a) That the Puketapapa Local Board table the report regarding Christchurch Earthquake Assistance, considered by the Governing Body at its meeting held 24 February 2011, and the Media Release from the Mayoral office, as extraordinary items, on the grounds that:

- The issue has wide community interest at the current time.

**CARRIED**

This item will be considered at item 19 of this agenda.

## 11 Notices of Motion

There were no notices of motion.

## 12 Reports requested / pending

Resolution number PKTPP/2011/23

MOVED by Member Turnbull, seconded Member Kumar:

- a) That the report be received.

**CARRIED**

## 13 Stakeholder Engagement and Communication Strategy and the Stakeholder Engagement and Communication Plan for the Puketapapa Local Board Plan

Resolution number PKTPP/2011/24

MOVED by Member Turnbull, seconded Member Kumar:

- a) That the report be received.
- b) That the Puketapapa Local Board adopt:
- i) the Stakeholder Engagement and Communications Strategy that outlines the ongoing engagement approach to be undertaken by the board; and
  - ii) the Stakeholder Engagement and Communications Plan for the Puketapapa Local Board Plan as set out in Attachment A that outlines the specific engagement approach to be undertaken by the board in the development of the local board plan.

**CARRIED**

**14 Puketapapa Local Board community facilities status**

Resolution number PKTPP/2011/25

MOVED by Member Turnbull, seconded Member Wood:

- a) That the report be received.

**CARRIED**

**15 Local Board Workshop Notes**

Resolution number PKTPP/2011/26

MOVED by Member Turnbull, seconded Member Kumar:

- a) That the Puketapapa Local Board workshop notes for the meeting held on 9 February 2011, be received.

**CARRIED**

**16 Board member reports**

Resolution number PKTPP/2011/27

MOVED by Member Turnbull, seconded Member Fairey:

- a) That the Puketapapa Local Board reports be received.

**CARRIED**

**17 Chairperson's report**

Resolution number PKTPP/2011/28

MOVED by Member Turnbull, seconded Member Kumar:

- a) That the report be received.
- b) That the Puketapapa Local Board request a full briefing plus documentation from officers as to past Auckland City Council dealings with the Steering Group for the proposed Chinese Garden concept and any plans that may have been drawn up that relate to a garden being situated in the Puketapapa Local Board area.
- c) That the Puketapapa Local Board send the following note to Winstone Quarry Stakeholders on behalf of the Board:

“To the stakeholders who have an interest in the future uses of the Winstone Quarry land in Three Kings, Mt Roskill.

The Puketapapa Local Board supports development (over the period from now until the land is sold) that will not constrain how the property may be used. The Board seeks active involvement in the process to ensure the property will benefit local and regional generations of residents in the future. The Board is willing to facilitate meetings between stakeholders to achieve this end.”

**CARRIED**

**18 Albert-Eden-Roskill ward - Councillors report**

Resolution number PKTPP/2011/29

MOVED by Member Turnbull, seconded Member Fairey:

- a) That the verbal update from the Albert-Eden-Roskill ward councillors, be received.

**CARRIED**

**19 Consideration of Extraordinary Business Items**

**19.1 Governing Body report - Christchurch Earthquake Assistance**

A copy of the tabled documents have been placed on the file copy of the minutes and can be viewed at the Auckland Council website.

Resolution number PKTPP/2011/30

MOVED by Member Turnbull, seconded Member Wood:

- a) That the report regarding Christchurch Earthquake Assistance, considered by the Governing Body at its meeting held 24 February 2011, and the Media Release from the Mayors office, be received.

**CARRIED**

7.45 pm

The Chairperson thanked Members for their attendance and attention to business and declared the meeting closed.

CONFIRMED AS A TRUE AND CORRECT RECORD  
AT A MEETING OF PUKETAPAPA LOCAL BOARD  
HELD ON

**DATE:**.....

**CHAIRPERSON:**.....

## Auckland International Cultural Festival 2011



## Stage Performances

3 Entertainment Stages:

- Percussion & Music
- Dance
- Youth



## Stalls



## Malaysian Kitchen



## Indonesian Music & Art

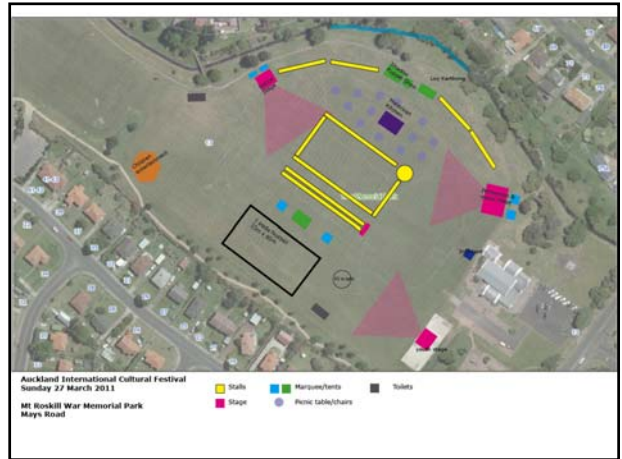




## Loy Kratong



## Sports Arena



# Auckland Chinese Garden Steering Committee

Presentation to  
Auckland City  
Puketapapa Local Board  
Thursday, 24 February 2011

## Auckland Chinese Garden Steering Committee

A dedicated group of twelve community leaders and business persons have been actively investigating suitable sites for a Chinese Garden for the people of Auckland for nearly two years.

All the Committee members are passionate about this exciting project which will be a tangible appreciation by the Chinese community to all Aucklanders for accepting us wholeheartedly in our new homeland.

## Why Auckland needs a Chinese Garden

### *Recognising the City's Heritage*

- The Chinese have lived in Auckland for over 100 years with the first Chinese arrival from Southern China in the 1870s, and settled in what is now the downtown area
- Auckland has a large number of Chinese as part of its community - the 7th largest Chinese immigrant population in the world
- Other small cities in NZ with less Chinese population have a Chinese Garden
- The Chinese Government supports the idea of a Chinese Garden in Auckland region.

## Why Auckland needs a Chinese Garden

### *Honouring Our Past*

- Expression of gratitude by the current generation of Chinese for past generations of Chinese who immigrated to Auckland
- Expression of gratitude by recent Chinese immigrants for the opportunities available in Auckland
- Recognition of the co-operation between the Chinese and other New Zealanders since immigrants first arrived in New Zealand

## Why Auckland needs a Chinese Garden

### *Creating a Community Asset*

- Recognisably and distinctly Chinese
- A tranquil and serene retreat from routine daily life
- Enjoyable for Aucklanders of all ages and ethnicities
- A 'must see' tourist destination
- A place for Chinese performances and cultural exchanges

## Why Auckland needs a Chinese Garden

### *Reinforcing our Connection for the Future*

- China is now NZ's second largest trading partner with trade approx \$20 billion since NZ signed a Free Trade Agreement with China in 2008
- Symbolise the established bond of friendship between the Chinese and Aucklanders and to strengthen its sister city relationships with Guangzhou, Ningbo & Qingdao
- An integrated and substantial monument for the Auckland super city to mark its Chinese heritage and its significant multi-cultural presence in the Asia - Pacific area

## Project Planning Details

Auckland Chinese Community contributions	\$1,000,000.00
Sister Cities & Overseas Chinese contributions	\$2,000,000.00
Community Trusts & Corporate contributions	\$1,000,000.00
Central & Local Government	\$4,000,000.00

Total Estimated Project Cost \$8,000,000.00

A Charitable Trust will be formed as soon as a site is confirmed and fundraising will commence.

After Resource & Building consents are obtained, there will be a two year construction period.

The completed garden will be gifted to the people of Auckland City.

A Friends of Auckland Chinese Garden Society will be formed to assist with ongoing maintenance and administrative matters.

## Site Location



## Concept Plan



## Artist's Impression



## Request for Approval

The Auckland Chinese Garden Steering Committee is seeking the approval in principle by the Puketapapa Local Board to use part of the Monte Cecilia Park area for the Auckland Chinese Garden as shown in the plans displayed earlier.

## Media release

### Office of the Mayor

24 February 2011

## **Auckland support for Christchurch**

Auckland Council is to give an immediate \$1.5 million to the Canterbury earthquake relief effort.

The council asks Aucklanders to follow its lead and dig deep for the people of Christchurch.

“We have watched our fellow community with apprehension and grief. We send our love, care, concern, compassion and our prayers,” says the Mayor.

“We have sent Auckland Council staff to provide immediate resource and expertise. Now we want to continue our commitment to being part of this united national response by essentially giving \$1 per Aucklander, to lead the way,” says Len Brown.

The council made an ongoing commitment to provide staff resources and expertise over the coming 12 months, and has requested Watercare and Auckland Transport do the same.

It has also requested that council staff and CCOs adjust contractual arrangements with suppliers where those suppliers are critical to emergency and rebuilding efforts.

Councillor Michael Goudie, chairperson of the Civil Defence and Emergency Management Committee, says New Zealand has always been known for two degrees of separation and this is more evident than ever before.

“Aucklanders are already opening their homes to Christchurch evacuees, starting overnight last night when volunteers picked up hundreds of people flying into Auckland and gave them shelter. The focus for Auckland is on welfare. We have 36 flights coming into Auckland today.”

Further details on how Aucklanders can help with accommodation and assistance will be released later today.

**Ends**

Editors' notes:

**Deployment of Auckland Council staff to Christchurch was at 5pm 23/2/11 as follows:**

25 building inspectors

12 engineers

5 transport staff

22 emergency response staff – support to other USAR (Urban Search and Rescue) teams and Fire Service

13 civil defence staff

Total: 77 staff from Auckland Council.

Further Auckland Council staff are on standby should additional support be requested.

For media assistance contact:  
Melanya Burrows  
Press Secretary  
Office of the Mayor  
Phone: +64 27 239 0429

---

## GOVERNING BODY REPORT

### Report Name: Christchurch Earthquake Assistance.

---

## Executive Summary

This report is to:

1. Brief the Governing Body on the short and long-term effects of the Christchurch earthquakes of Tuesday 22 February.
2. Gain Governing Body endorsement of Auckland Council actions already taken
3. To make recommendations on future assistance, in particular financial support to the earthquake affected people of Christchurch and Canterbury, via the Red Cross, the Christchurch City Council and if appropriate, other neighbouring local authorities.

## Recommendation/s

- a) That the report be received.
- b) That the Governing Body:
  - i) Endorses the actions taken to date as set out in this report
  - ii) Approves a Canterbury Earthquake Relief Fund of \$ (amount to be inserted) to be funded from the general revenues of the Auckland Council.
  - iii) Establishes a Group of Councillors to administer the fund comprising –
    - the Mayor
    - Councillor Michael Goudie
    - Councillor George Wood
    - Councillor Penny Webster
  - iv) Delegates to this group the ability to approve the distribution of the Canterbury Earthquake Relief Fund (total \$amount to be inserted) within the financial year to 31 June 2011,
  - v) Delegates to the Council Chief Executive for a period of twelve months, the ability to approve assistance, in the form of staff resources and expertise, as needed and as the Auckland Council is reasonably able to spare.
  - vi) Requests the Governance of Watercare Ltd and Auckland Transport to approve assistance for a period of up to twelve months, in the form of staff resources and expertise, as needed and as they are reasonably able to spare.
  - vii) Requests that the Council Chief Executive and Governance of Council Controlled Organisations adjust contractual arrangements with suppliers where those suppliers are critical to emergency and rebuilding efforts and where it is reasonably practicable to do so.

## Background

The Christchurch earthquakes of 22 February are the most destructive in terms of loss of life and property since the Napier Earthquake of 1931. With 75 people confirmed dead (at the time of writing) and this number expected to increase, this is the worst human tragedy for New Zealand since the Mt Erebus disaster of 1979. New Zealand is currently witnessing a major historic event.

The needs of the people of Christchurch are large and immediate in terms of finding the buried, treating injured, recovering and identifying those killed by the quake. Shelter and food is needed for those displaced by it. Emotional and psychological support will be needed by those who have suffered loss and trauma.

---

There is also an immediate need to restore the city's "lifelines" of roads, water, wastewater and telecommunications networks. This is necessary to speed up Christchurch's recovery and prevent any outbreak of water borne diseases.

Coping with a disaster of this magnitude requires the coordination of resources on at least a national level. The Government has accepted offers of assistance from overseas. It is certainly beyond the means of Christchurch and Canterbury to deal with the short and medium term costs, which are estimated to be toward \$10 billion and may be higher.

### **Actions taken to date**

Due to the need for quick action, Council management has already made a number of decisions to provide assistance. These will be summarised in more detail via a separate report to the meeting but include:

- Clive Manley, Manager Civil Defence & Emergency Management, has been appointed a controller at Civil Defence in Wellington.
- Wally Thomas from Auckland Transport and Glynn Jones from Mayor's office have been deployed to Christchurch to help support the communication efforts and manage queries from the international media.
- Two Immediate Response Teams have been activated and are on 1 hours notice to move. The team's vehicles have already started to move to Christchurch.
- 25 Auckland Council Building Inspectors were deployed from Whenuapai at 8.00am on 23 Feb 11.
- Coordinated incident management (CIMs) trained staff have been identified and deployed from Whenuapai.
- Three Welfare Teams have been identified and are available for deployment, additional welfare teams are available to be put on standby if needed.
- An Auckland based Rural Fire National Incident Management Team is available for deployment.
- 50 Auckland Council engineers are being identified and made ready for deployment at short notice.

### **Ongoing Support and Creation of Canterbury Earthquake Relief Fund**

This report recommends that, on behalf of the people of Auckland, the Council offers whatever practical assistance in the form of personnel and expertise it is reasonably practicable to release and also, financial assistance to a level agreed by Councillors at the meeting. Some enquiries have been made of other major local authorities and it is likely that similar gestures are and will continue to be made from elsewhere in the local government sector.

It is proposed approved funds be allocated between:

- providing immediate assistance to those in the most need in Christchurch and its neighbouring areas, that is the injured, homeless and those who have lost the means to provide food for themselves and their families. This will be through existing and reputable channels such as the Red Cross.
- assisting Christchurch City Council and other affected neighbouring territorial authorities to recover their essential services and provide ongoing assistance to their communities. It is already clear that the scale of the disaster is well beyond the resources of even a large local authority like Christchurch City Council. As the immediate effects of the disaster are local and the Council are the elected representatives of those people affected by the earthquake, it is appropriate that it make the final decisions about the allocation of any funds Auckland wishes to gift to them.

Final decisions about what proportion of the funds are allocated to relief agencies and what proportion of funds are gifted to the people of Christchurch and Canterbury (through their local

---

authorities) should be made by a delegated group comprising the mayor and three Councillors (see below).

### **Political Oversight**

It is recommended that the distribution of any funds be delegated to a group of the following four Governing Body members:

- Mayor Len Brown
- Councillor Michael Goudie
- Councillor Penny Webster
- Councillor George Wood

Reporting of progress in addressing recovery needs in Canterbury, the commitment of resources by Council and its CCOs and all related matters can be appropriately directed to existing Committees (notably the Civil Defence and Emergency Management Committee and Accountability and Performance Committee).

### **Decision Making**

The report makes the following recommendations

That the Governing Body:

- i) Endorses the actions taken to date as set out in this report
- ii) Approves a Canterbury Earthquake Relief Fund of \$ 1,500,000 to be funded from the general revenues of the Auckland Council.
- iii) Establishes a Group of Councillors to administer the fund comprising –
  - the Mayor
  - Councillor Michael Goudie
  - Councillor George Wood
  - Councillor Penny Webster
- iv) Delegates to this group the ability to approve the distribution of the Canterbury Earthquake Relief Fund of \$1,500,000 within the financial year to 31 June 2011,
- v) Delegates to the Council Chief Executive for a period of twelve months, the ability to approve assistance, in the form of staff resources and expertise, as needed and as the Auckland Council is reasonably able to spare.
- vi) Requests the Governance of Watercare Ltd and Auckland Transport to approve assistance for a period of up to twelve months, in the form of staff resources and expertise, as needed and as they are reasonably able to spare.
- vii) Requests that the Council Chief Executive and Governance of Council Controlled Organisations adjust contractual arrangements with suppliers where those suppliers are critical to emergency and rebuilding efforts and where it is reasonably practicable to do so.

### **Significance of Decision**

The decisions recommended in this report do not cross any thresholds in the Significance Policy.

### **Consultation**

The need to act quickly makes consultation impractical. The size of the financial commitment in relation to the Council's overall financial position does not make consultation so critical that it should delay the Council's offer of assistance.



---

## **Financial and Resourcing Implications**

The offer of financial assistance is appropriate given Auckland's scale and the scale and severity of the tragedy faced by the people of Christchurch

## **Legal and Legislative Implications**

There are no legal impediments to approving the recommendations of this report.

## **Implementation Issues**

Implementation will be directed by senior management supporting the working group.

## **Attachments**

None

## **Signatories**

Authors	Phil Wilson, Chief of Staff, Mayoral Office
Authorisers	Phil Wilson, Chief of Staff, Mayoral Office